

SURVEY



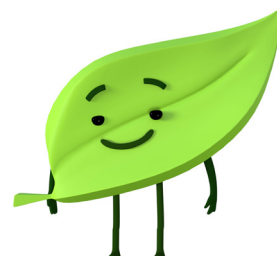
DO IT
FOR YOUR
PLANET

GREEN AMBASSADORS



PLANTS AND ANIMALS

Find out the answers to each question and tick yes or no to record your answer.
You may need some help from your teacher to answer some of the questions.



TEAM NAME:

PUPIL NAME:

DATE:

- 1

 Does the school have a garden for growing fruit, vegetables or herbs? YES ☐ NO ☐
- 2

 Is it used by pupils? YES ☐ NO ☐
- 3

 Does the school grow any plants in containers (for example pots or bags)? YES ☐ NO ☐
- 4

 Does the school have a pond for wildlife? YES ☐ NO ☐
- 5

 Does the school carry out wildlife surveys on the grounds? YES ☐ NO ☐
- 6

 Do you have a school tree 'nursery', wooded area or woodland trail? YES ☐ NO ☐
- 7

 Does the school have any birdfeeders, bird tables or bird boxes? YES ☐ NO ☐
- 8

 Does the school have a range of plants, bushes and trees which will encourage lots of different types of wildlife? YES ☐ NO ☐

9 Does the school use pesticides to protect its plants?

YES  NO 

10 Does the school do anything else to encourage wildlife in the grounds?

YES  NO 

11 Does the school have any artwork or displays which show pupils love for nature?

YES  NO 

Have you got any ideas for improvements that could be made to the school grounds? Write them down opposite - this will help you to remember them!

