

COMMON UK BEE SPECIES

How many species have you seen?



Buff-Tailed Bumblebee

ID: Distinctive yellow and black bands and a white tail.



Common Carder Bee

ID: Ginger or brown on top of the thorax.



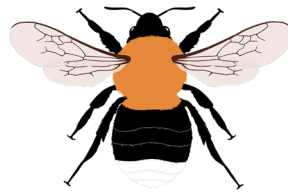
Early Bumblebee

ID: Yellow and black bands and an orange tail. Small size.



Shrill Carder Bee

ID: Pale yellow and grey bands with a peachy tail.



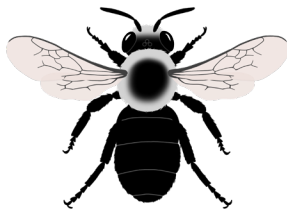
Tree Bumblebee

ID: Ginger thorax, black abdomen and a white tail. Black underside.



Honeybee

ID: Abdomen with amber bands or completely black. Buff-haired thorax. Rear legs bare and shiny.



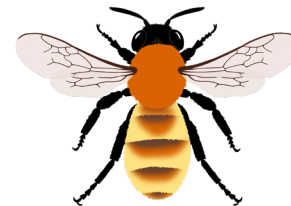
Ashy Mining Bee

ID: Black with double ashy bands across the thorax.



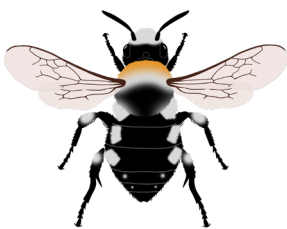
Orange-Tailed Mining Bee

ID: Rusty thorax. Black abdomen with tuft of rusty hairs on the rear. Yellow rear legs.



Tawny Mining Bee

ID: Thick orange coat. Black leg and face hairs. Collects pollen on legs.



Common Mourning Bee

ID: Grey collar. White spots along abdomen. Sometimes all black. Pointed rear.



Leafcutter Bee

ID: Broad head and body.



Long-Horned Bee

ID: Grey-brown hair. Males have very long antennae.



Red Mason Bee

ID: Bristly orange hair with dark head and thorax showing through.



Small Scissor Bee

ID: Very small (6-7mm), black and shiny. Slender body with a large head.



Wool Carder Bee

ID: Yellow spots along abdomen.