

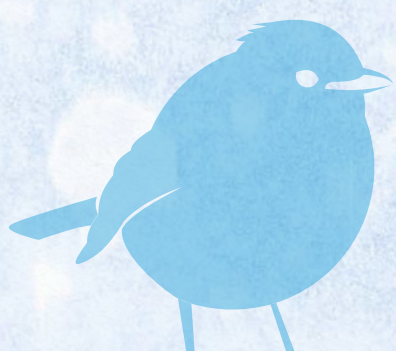


WINTER NATURE SPOTTER

Scotland is known for its incredible wildlife and habitats. From the city to the countryside, nature can be found all around us.

Use our spotter sheet to **connect with your local environment** and **discover the amazing species** that call it home.

You can **screenshot the spotter page for later** and **tag us** in your adventures - we'd love to see what you spot!





WINTER NATURE SPOTTER



Frosty leaf



Robin



Holly



Earth worm



Lichen



Leafless Tree



Pinecone



Snail



Frosty web



Wood pigeon



Fungi*



Scots pine

*Admire fungi with your eyes, rather than touch or pick them.



WINTER

NATURE SPOTTER

Fun Fact:

In the UK, the biggest common earthworm ever found was a whopping 40cm long, and was discovered in a vegetable patch!



Remember to respect nature by not disturbing it, and leave everything as you found it.