



SUMMER NATURE SPOTTER

There's so much to see during nature's busiest time of the year. The trees display shady canopies, parks are packed with colourful flowers, and growing spaces are brimming with delicious fruit and vegetables.

Use our spotter sheet to **connect with your local environment** and **discover the amazing species** that call it home.



You can **screenshot the spotter page for later** and **tag us** in your adventures - we'd love to see what you spot!

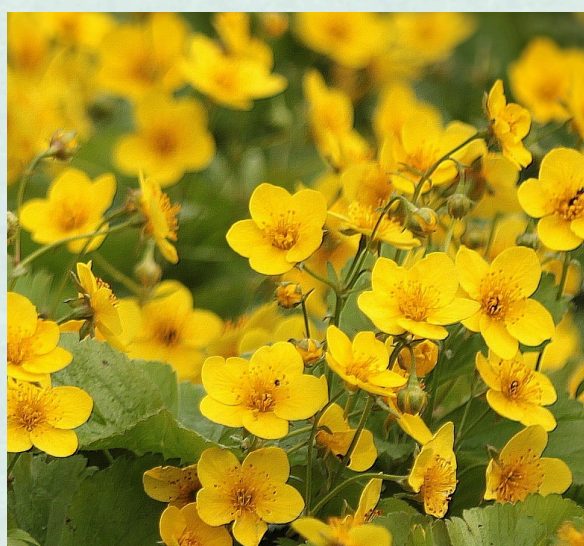




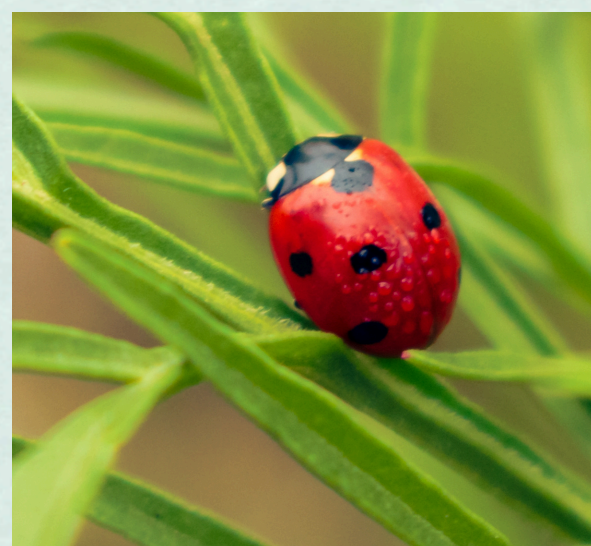
SUMMER NATURE SPOTTER



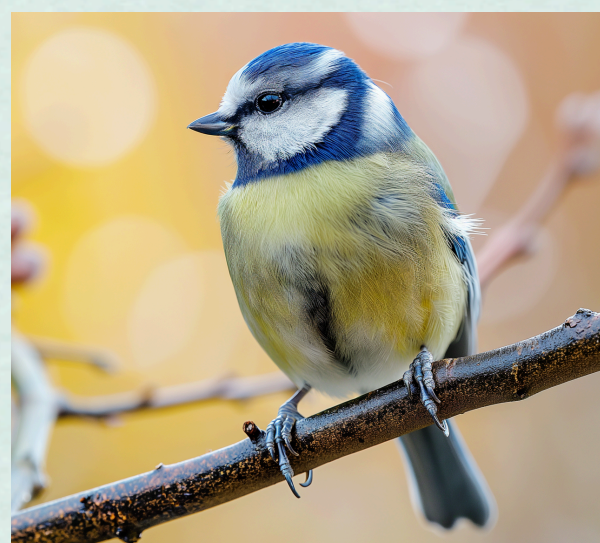
Dragonfly



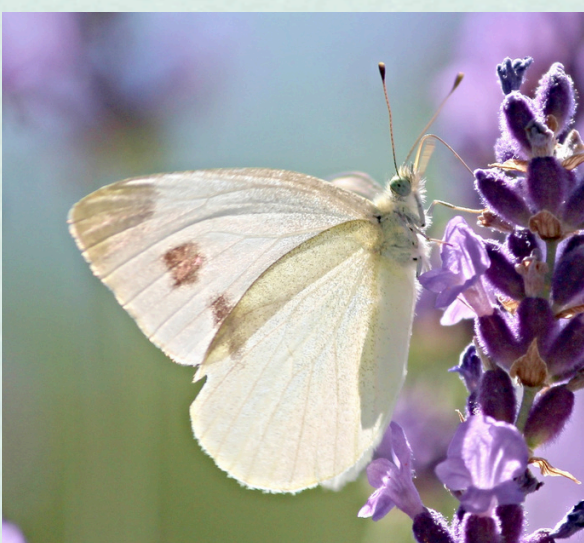
Buttercups



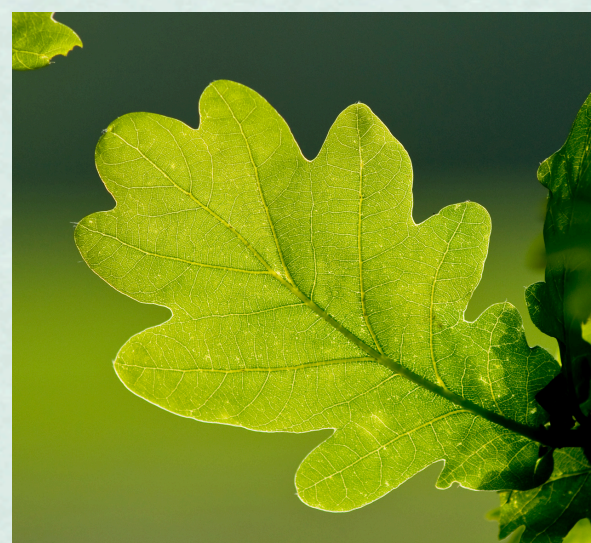
Ladybird



Blue tit



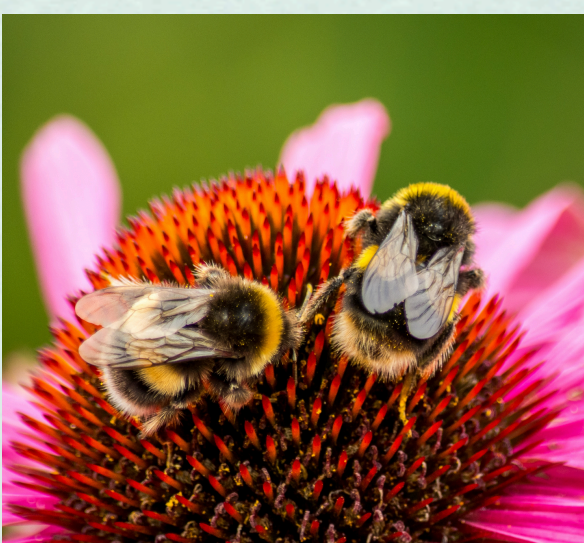
Cabbage white



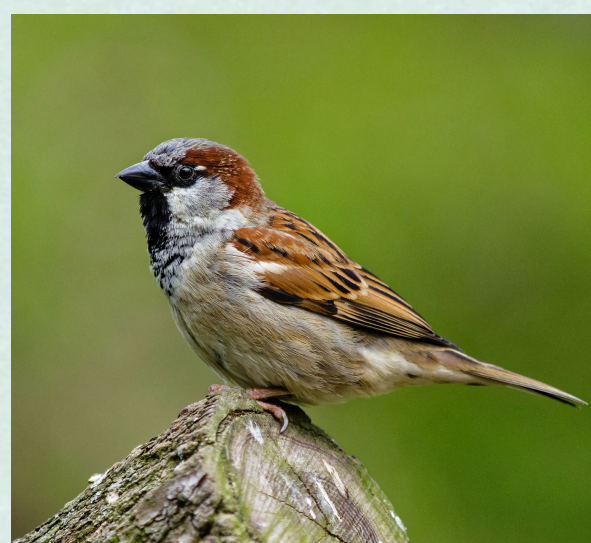
Oak leaf



Elderflower*



Bumblebee



Sparrow



Snail



Earth worm



Rowan tree*

*Elderflower & rowanberries should not be eaten raw. If unsure, don't forage.



SUMMER NATURE SPOTTER

Fun Fact:

The rowan tree has a special place in the hearts of Scottish people. It's steeped in mythology and is commonly planted at doorways as a protection against witches and fairies. Their red berries are also rich in Vitamin C.



Remember to respect nature by not disturbing it, and leave everything as you found it.

