

# NATURE SPOTTER

## Towns & cities

Nature can be found everywhere in our towns and cities, and not just in our green spaces. From skyscrapers to people's back yards, you'll find spectacular species like sparrowhawks and fantastic foxes! Just take a closer look outside or in your garden and you're sure to find something!

## Did you know?

- Bumble bees actually have four wings! Two wings on each side that hook together to form one larger pair when flying and then unhook when not flying.
- The badger is the UK's largest land predator. Did you know that up to 80% of a badgers diet is earthworms!
- Did you know that a woodlouse is a crustacean and not an insect, and are more closely related to crabs and shrimps!



☐ Blackbird



☐ Blue tit



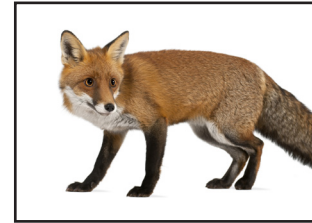
☐ Sparrowhawk



☐ Starling



☐ Badger



☐ Fox



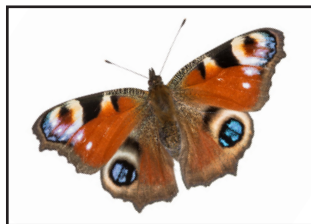
☐ Grey squirrel



☐ Hedgehog



☐ Bumblebee



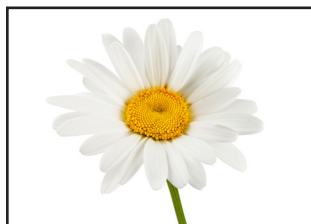
☐ Peacock butterfly



☐ Seven spot ladybird



☐ Woodlouse



☐ Common daisy



☐ Dandelion



☐ Nettles

## Did you know?

- Hedgehog numbers in the UK have fallen by over 65% since 1995.
- Non-native to the UK - Grey squirrels have severely outcompeted our native red squirrel. They can carry a disease called squirrel pox which they are immune to themselves but is deadly to red squirrels.

## Tricky to find

- Badgers are nocturnal and rarely seen during the day. During the summer months they may emerge from their sett shortly before sunset. The trick is to know of a sett that you can observe just before dusk, and downwind so the badgers can't smell you. Always remain a good distance from the sett and never disturb it in any way.
- Hedgehogs are nocturnal so can be hard to spot. They also hibernate from November to March so are most likely seen in the summer. Hedgehogs like dry places like under garden sheds or in piles of leaves or twigs.

SAVE OUR  
WILD ISLES



Working together to protect and restore UK nature.